



# Stark HS

*Housing Solutions*



By:





# Stark HS

Constructive technology based on a system of precast

By:

PL:







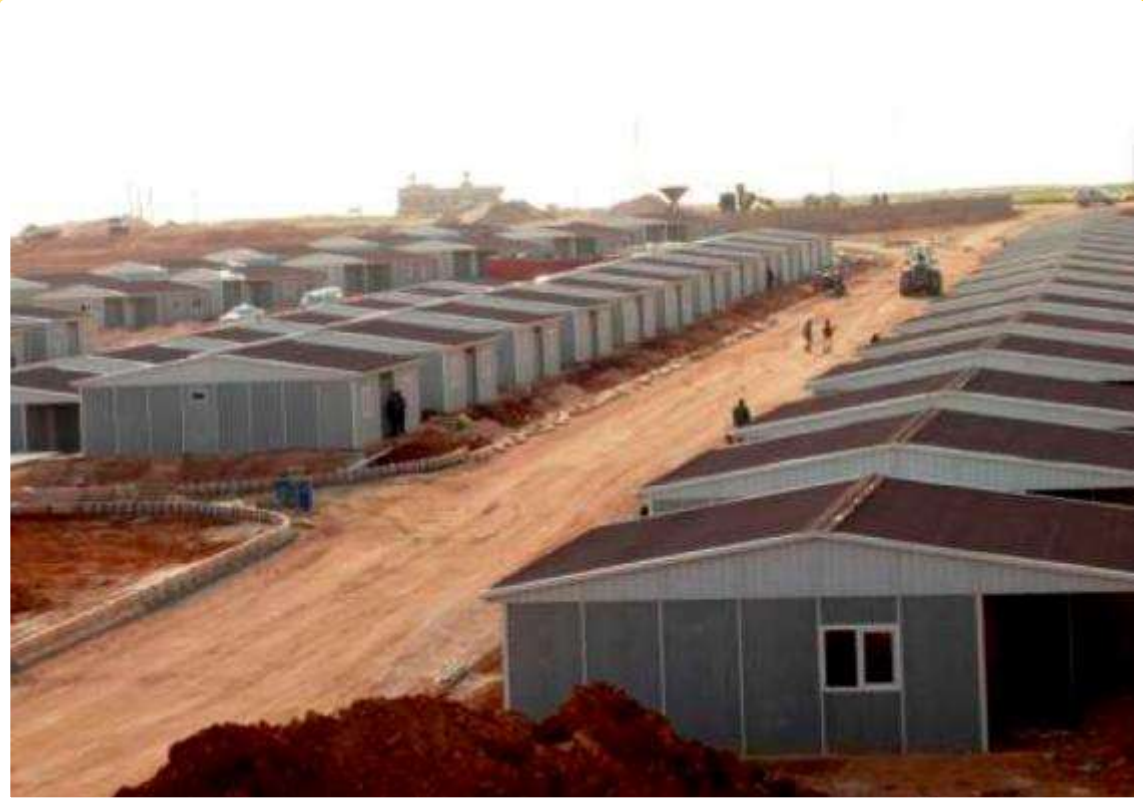
# Models and spaces

Stark HS offers a range of models with different construction areas between 47 and 158 m2, in one or two levels.

By:

PA:





# Fast Construction

Build system that allows home construction in three days. Ideal for low-cost mass housing projects.

By:

PL:





# *Models :*

---

By:

PA:





# Alice

47 m<sup>2</sup>

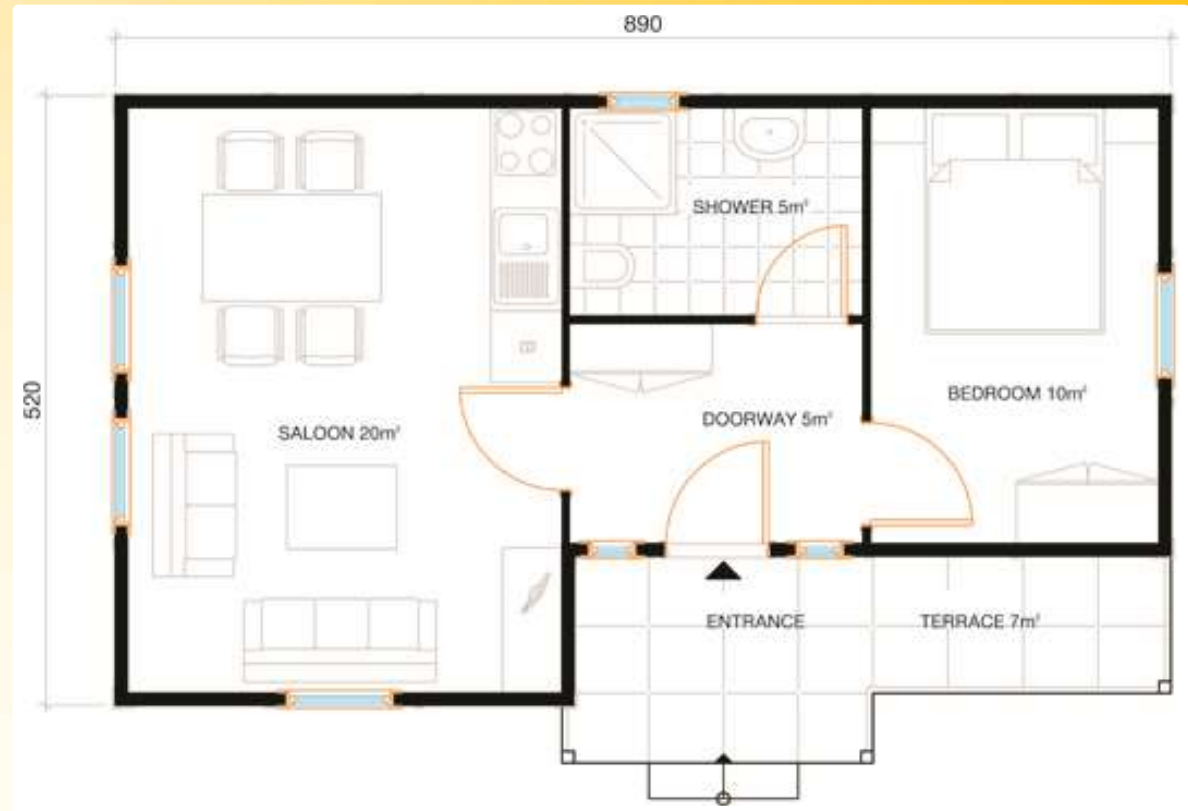
1 bedroom

1 bath

Kitchen - Dining Room -

Living Room

Terrace



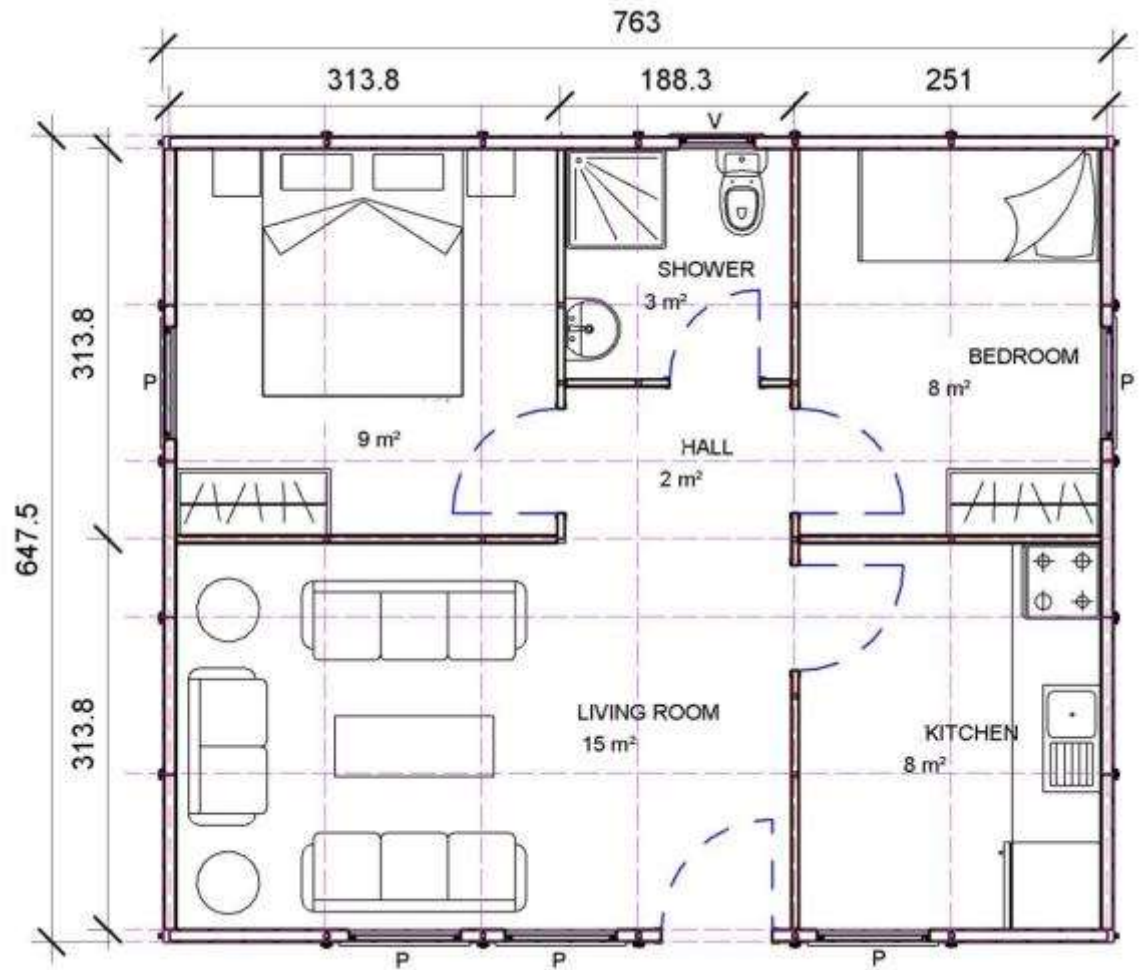
By:



PA:

# Lirio

50 m<sup>2</sup>  
2 bedrooms  
1 bath  
Living Room  
Kitchen - Dining



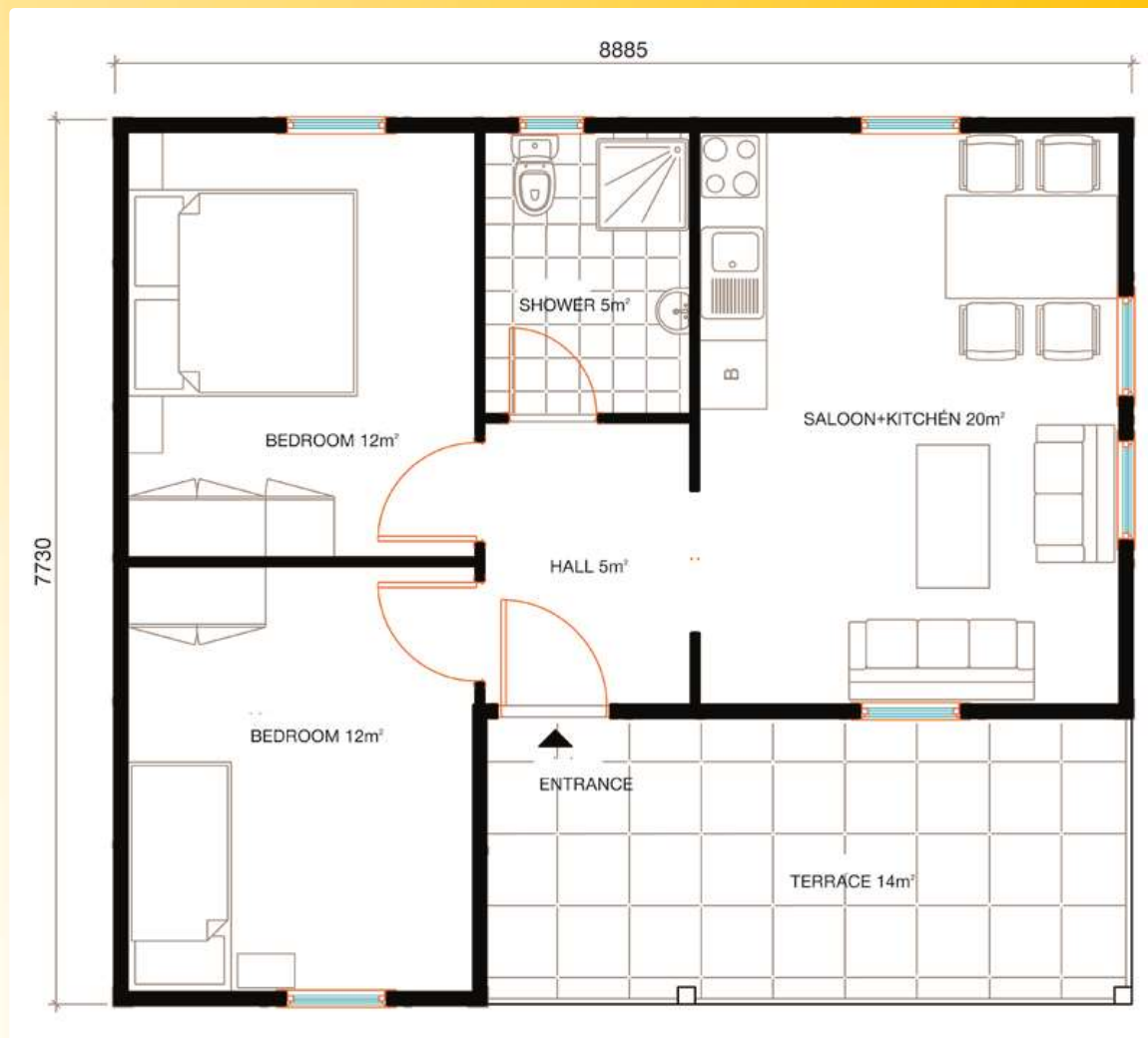
By:



PA:

# Clavel

68 m<sup>2</sup>  
2 bedrooms  
1 bathroom  
Kitchen - Dining room  
Living Room  
Terrace



By:



PL:



# Joyce

68 m<sup>2</sup>

2 bedrooms

1 bathroom

Living and Dining Room

Kitchen

Terrace



By:



PA:

# Jacinto

86 m<sup>2</sup>

2 bedrooms

1 bath

Living and Dining Room

Kitchen

Terrace



By:



PL:

# Sándalo

91 m<sup>2</sup>

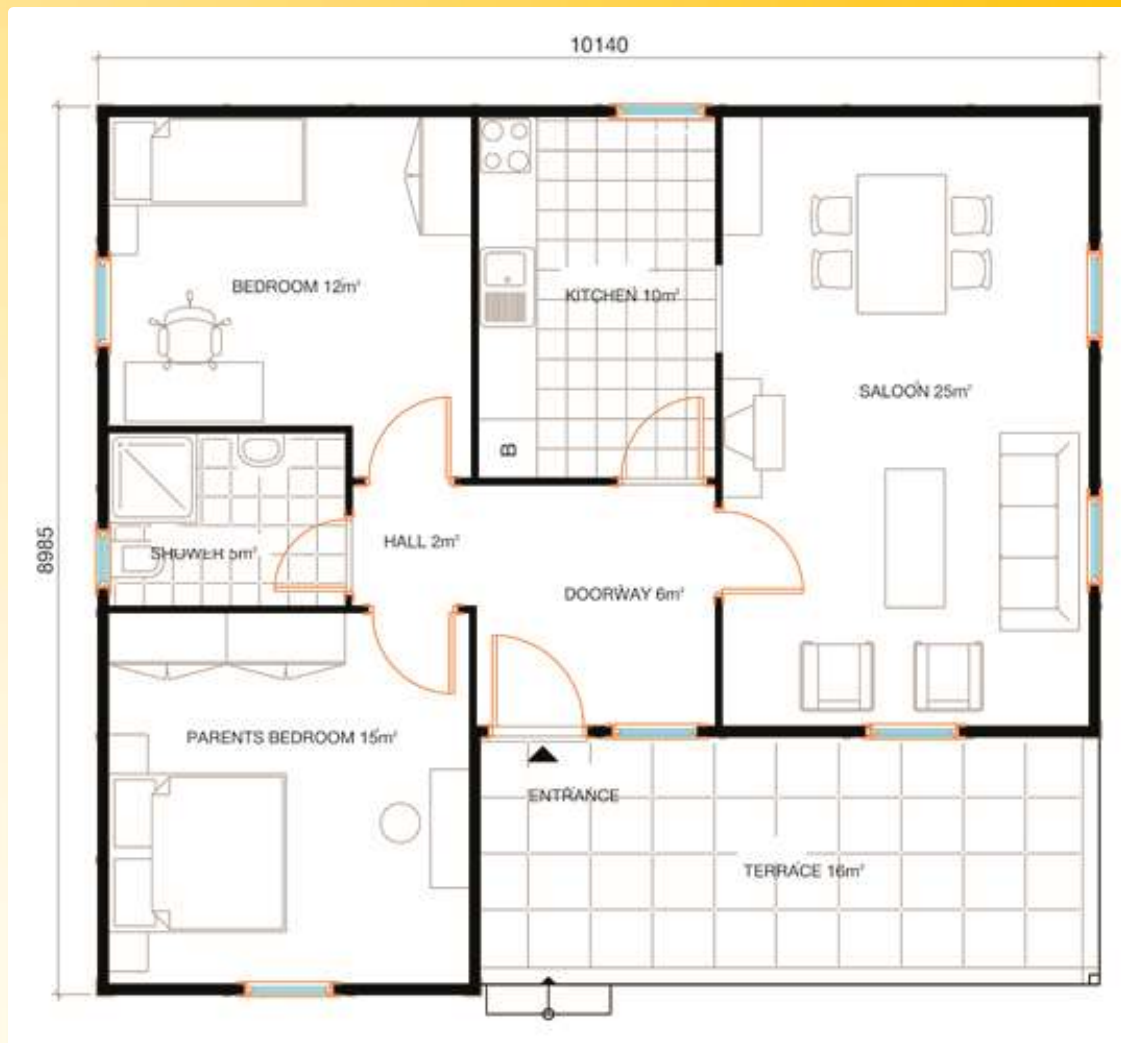
2 bedrooms

1 bathroom

Living and Dining Room

Kitchen

Terrace



By:



PA:



# Margarita

97 m<sup>2</sup>

2 bedrooms

1 bathroom

Living and Dining Room

Kitchen

Terrace



By:



PA:

# Loto

97 m<sup>2</sup>

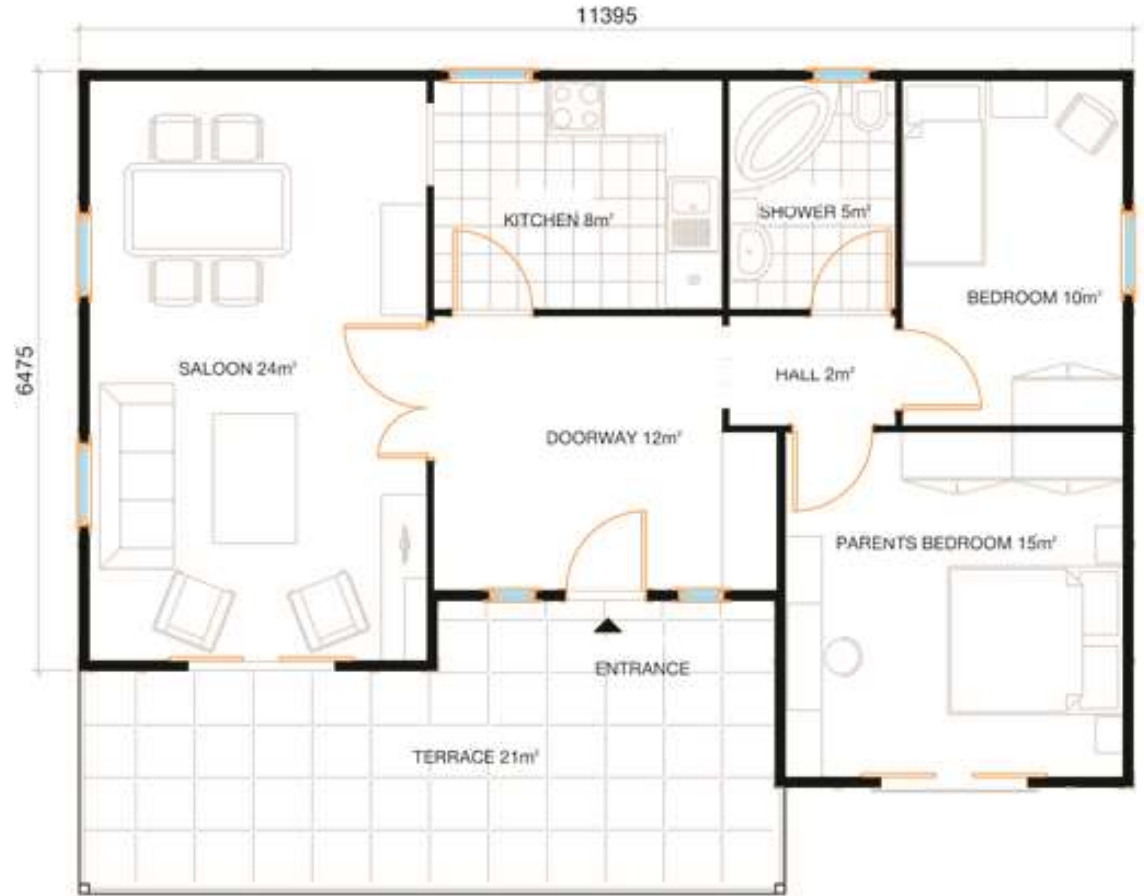
2 bedrooms

1 bathroom

Living and Dining Room

Kitchen

Terrace



By:



PA:

# Azalea

107 m<sup>2</sup>

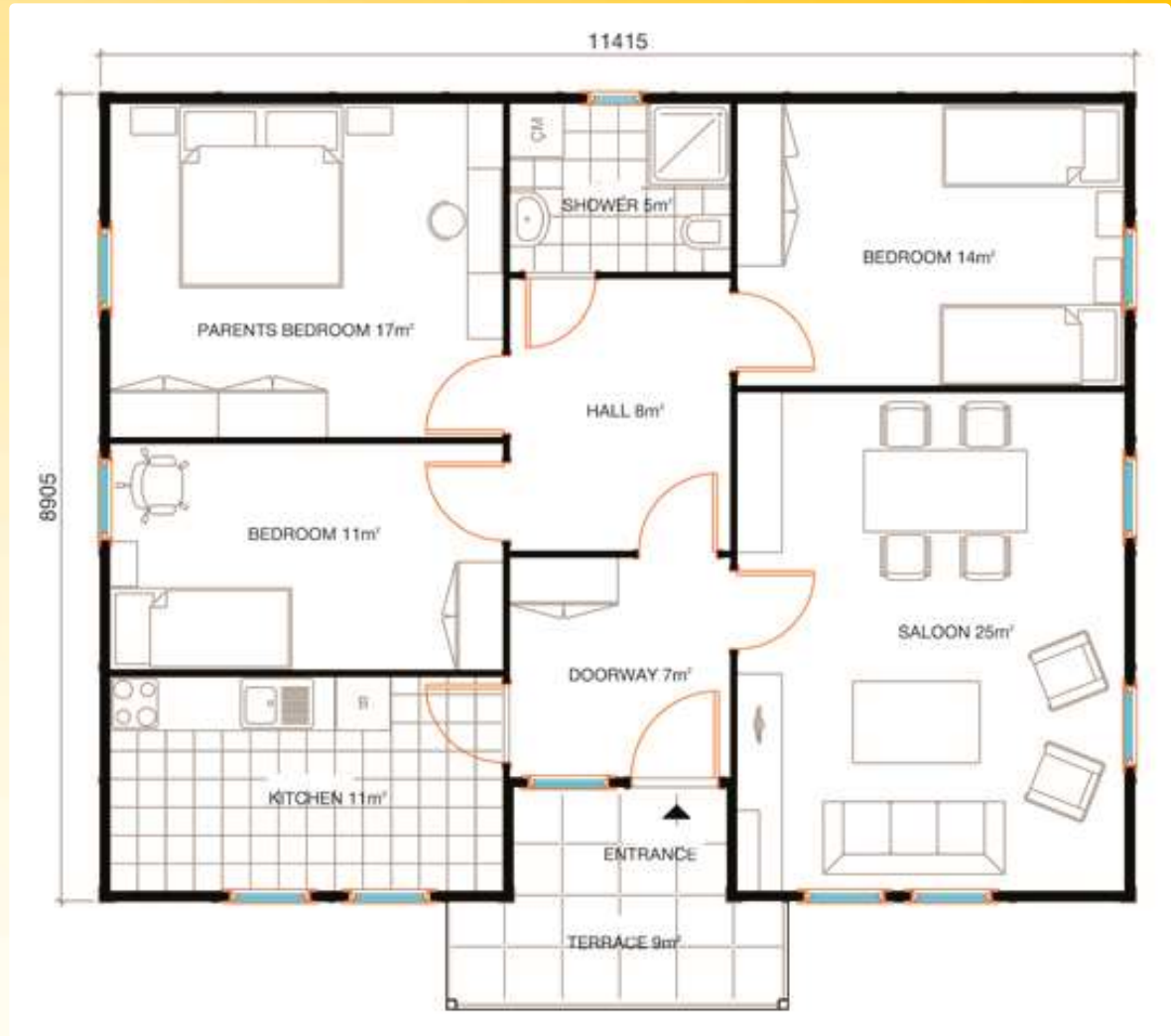
3 bedrooms

1 bathroom

Living and Dining Room

Kitchen

Terrace



By:



PL:



# Jazmin

148 m2

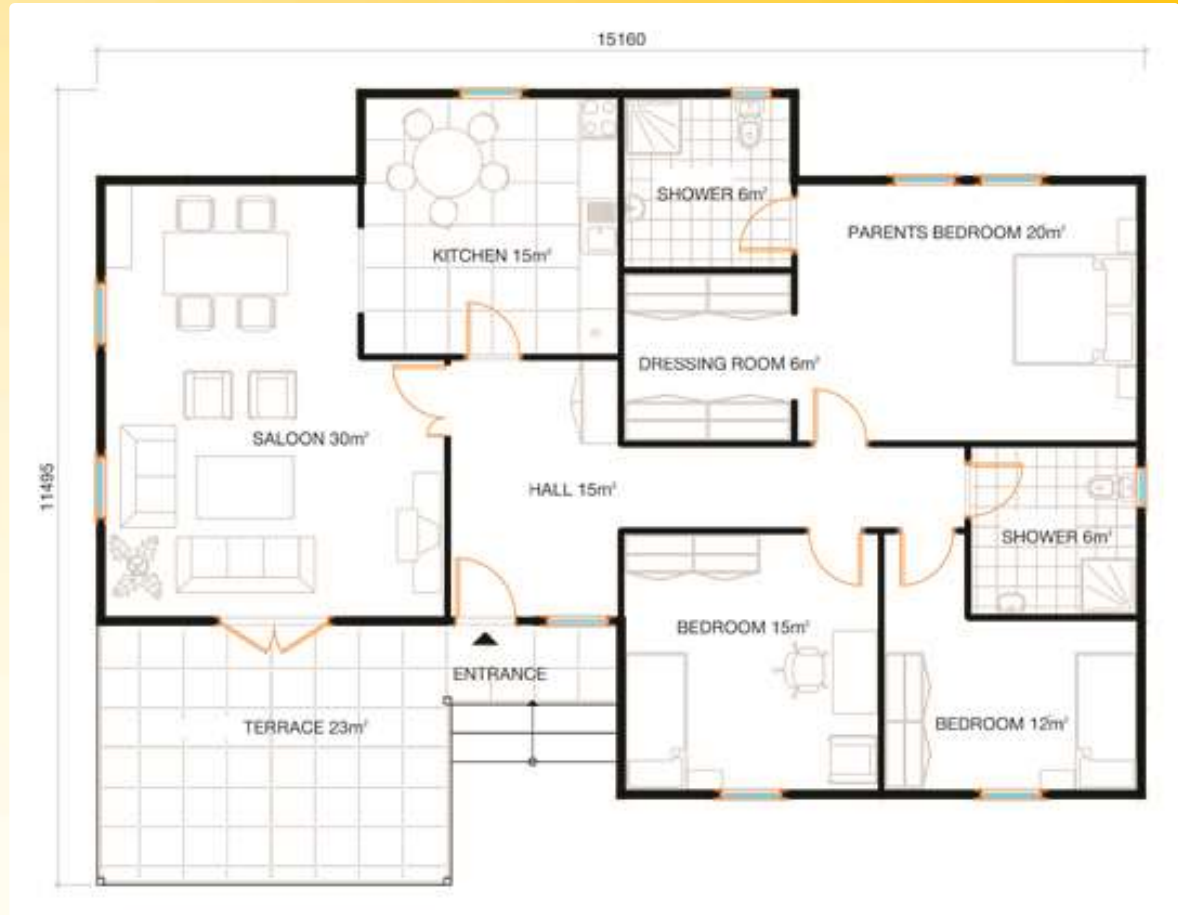
3 bedrooms

2 bathrooms

Living and Dining Room

Kitchen

Terrace



By:



PA:

# Cala

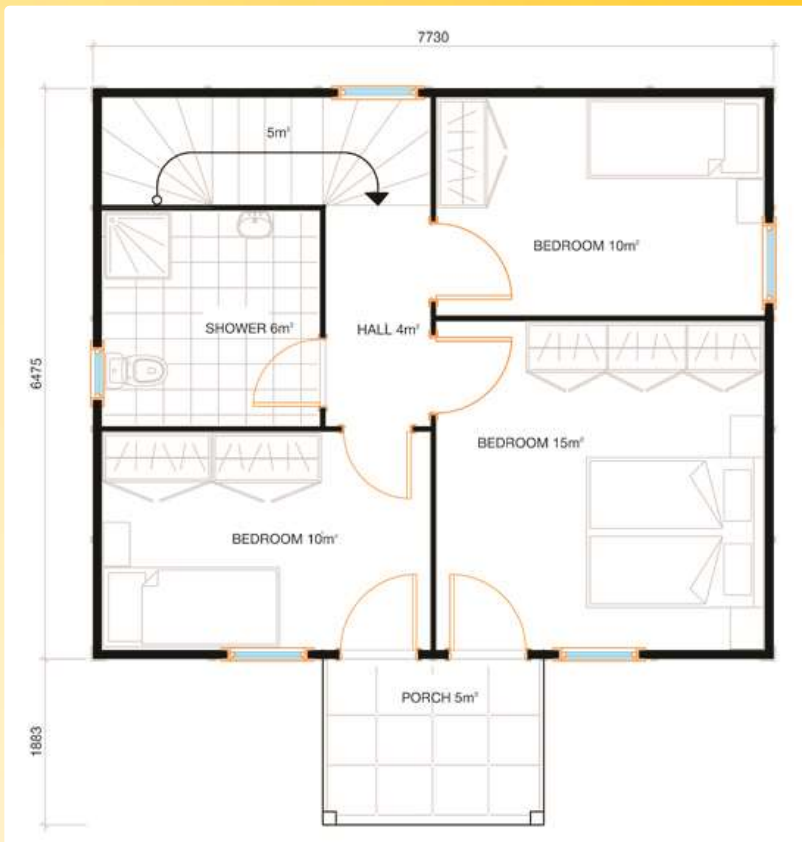
112 m<sup>2</sup>

3 bedrooms

1 bathroom and half  
bathroom

Living and Dining Room

Kitchen

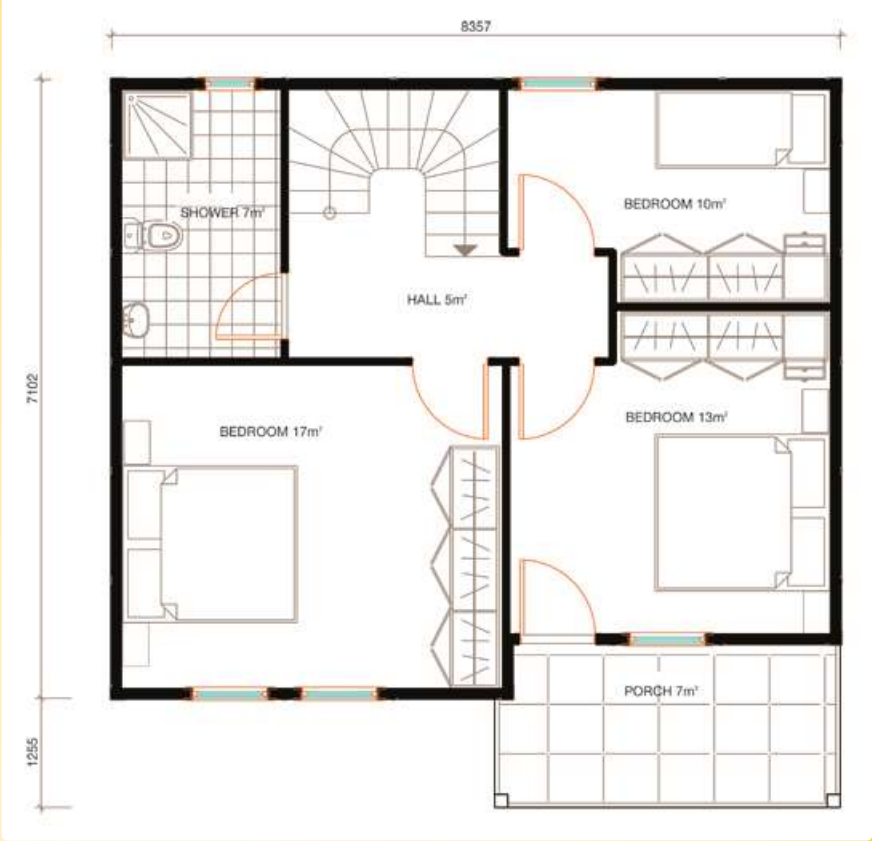


By:



# Campana

132 m<sup>2</sup>  
3 bedrooms  
1.5 bathroom  
Living and Dining Room  
Kitchen  
Terrace and balcony



By:





# Camelia

146 m<sup>2</sup>

3 bedrooms

3 bathrooms

Living and Dining Room

Kitchen

Terrace and balcony



By:



# Ciclamor

158 m<sup>2</sup>  
4 bedrooms  
3 bathrooms  
Living and Dining Room  
Kitchen  
Terrace



By:



# Details



---

By:

PL:





**Foundation plate  
Unfinished Floor  
executed**

**Door model  
referential**



**View of the interior of a house**

**Floor Finish**  
floating laminate (not  
included)

**Window model**  
referential



**View of the interior of a room**

**Floor Finish and  
Walls: Ceramic  
(Not included)**

**Furniture not included**



**View of the interior of a kitchen**

**Floor Finish and  
walls: ceramic (not  
included)**

**Size of room  
referential bathroom**



**View of the interior of the toilets**





**Window model**  
**Bathroom: PVC 40 x 60**

**Window model:**  
**PVC 120 x 100**



## **Details - Windows**

**Ribbed Finish  
referential. Houses  
Stark HS have  
smooth finish  
walls**



**2 story home under construction (Day 3)**

**Staircase structure  
in lighsteel  
galvanized**



**2 story home under construction (Day 3)**

**Ceiling Structure**

**Structure  
mezzanine lightsteel  
galvanized**



**2 story home under construction (Day 3)**

---



Window model  
referential



**Government Building under construction. 1 level. 240 m2 (Day 5)**

**Roof Model material**

**Truss system  
ceiling profiles  
column profiles  
and crown beams**



**Government Building under construction. 1 level. 240 m<sup>2</sup> (Day 5)**

**Truss Structure  
and belts lightsteel  
galvanized**



**Roof Structure**

# Specs

## Technical Data

- Load by snow: according to requirements
- Wind speed: according to requirements
- Load capacity Mezzanine: 200/350/500 kg / m<sup>2</sup>.  
Depending on the location and type of building.
- Seismic Calculations: Acceleration  $A_0 = 0.40$  (seismic region 1st grade)

## External and Internal Walls

- Thickness: 60 mm
- Exterior surface: Cement sheet pressing 8 mm thick (CE Certificated)
- sonic and thermal insulation: EPS of 44 mm thick (12 kg/m<sup>3</sup>)
- Fire Resistance: Fire Resistant Material Strong Class B1 according to DIN 4102
- Connection system: through galvanized profiles specially designed to be installed without welding.
- Exterior finish walls: acrylic paint (2 coats)

## Ceiling

- Dry areas: gypsum board 12.5 mm thick. 60 x 120 cm. Plastic paint.
- Wet areas: gypsum board 12.5 mm thick. 60 x 120 cm. Waterproof plastic paint.
- Insulation: Rockwool fiber 80 mm thick moisture resistant.
- Structure: Profiles omega powder painted galvanized electrostatic.

## Ceiling detail

- Roof Covering: galvanized trapezoidal Print 0.50 mm thick
- Belts and roof trusses: manufactured galvanized profiles seamless. To be installed without welding.
- Does not include droppers or rainwater channels
- The eaves have special holes to dislodge moisture and heat.



# Specs

## Exterior Doors

- Dimensions: 890 x 1960 mm
- Material: galvanized sheet of 0.70 mm thick insulating
- Door frame: galvanized profile of 1.5 mm thick (Electrostatic painting)
- Accessories: Lock, handle

## Internal Doors

- Dimensions: 840 x 1960 mm
- Material: MDF pressed LAM
- Door frame: galvanized profile of 1.5 mm thick (Electrostatic painting)
- Accessories: Lock, handle

## Windows

- Window: 120x100 cm PVC. Double glazing
- Window health: 40x60 cm PVC. Frosty glass
- Does not include nets

## Painting

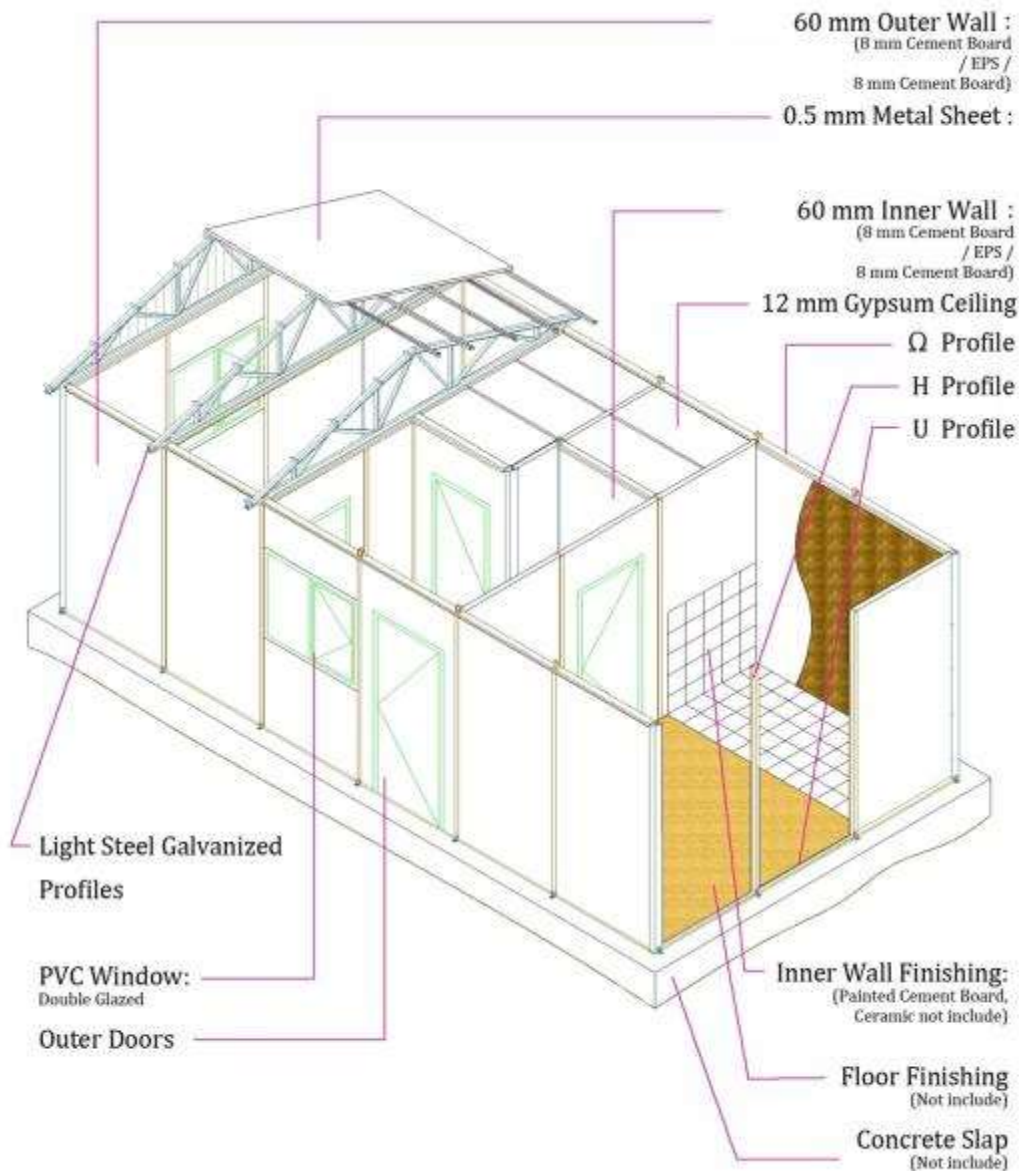
- Exterior surface: exterior acrylic paint (two layers)
- Interior surface: plastic paint

## Electricity (not included)

## Sanitary Facilities (surface mounting)

- White Water Piping: PVC. Installation surface.
- Sewage Piping: PVC. Installation surface.
- Sanitary Ware: Ceramic Sink and toilet. Shower 80x80 PVC or fiberglass
- Shower and Sink Faucets
- Point of hot and cold water in kitchen (not including cabinets)
- Adduction of white water and sewage pipeline on the outside of the house is not included.

# Construction Process



## Slab Foundation

- According factory specified dimensions.
- Thickness as engineering calculations depending on ground conditions (not included)
- foundation slab not included

## Building Survey

- structure, walls, roof, ceiling, windows, doors
- No need for welding

## Finishes

- mortar, ceramic and laminate flooring, inside and exterior of the building (not included)
- Installation of sanitary parts (not included).
- Electrical installation superficial (not included)



*Thank you!*

[info@starkmf.com](mailto:info@starkmf.com)

By:

PA:

