



STARK HS

Building Solutions

SCHOOLS

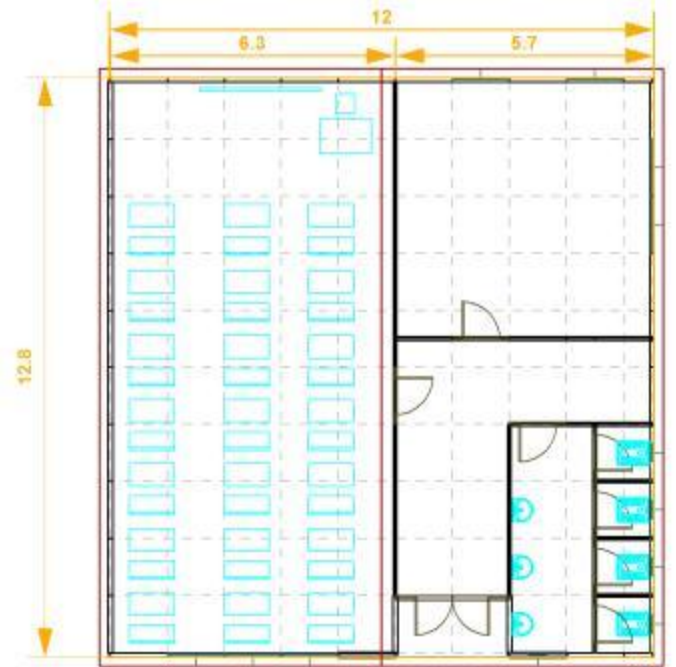
By:





SCHOOL 1 – 148 M2

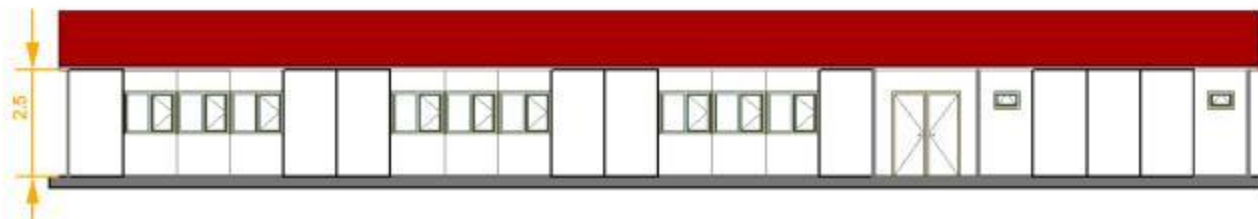
- 1 classroom
- 1 multi purpose area
- 1 bathroom





SCHOOL 2 – 353 M2

- 5 classrooms
- 2 multi purpose areas
- 4 bathrooms
- 1 Offices





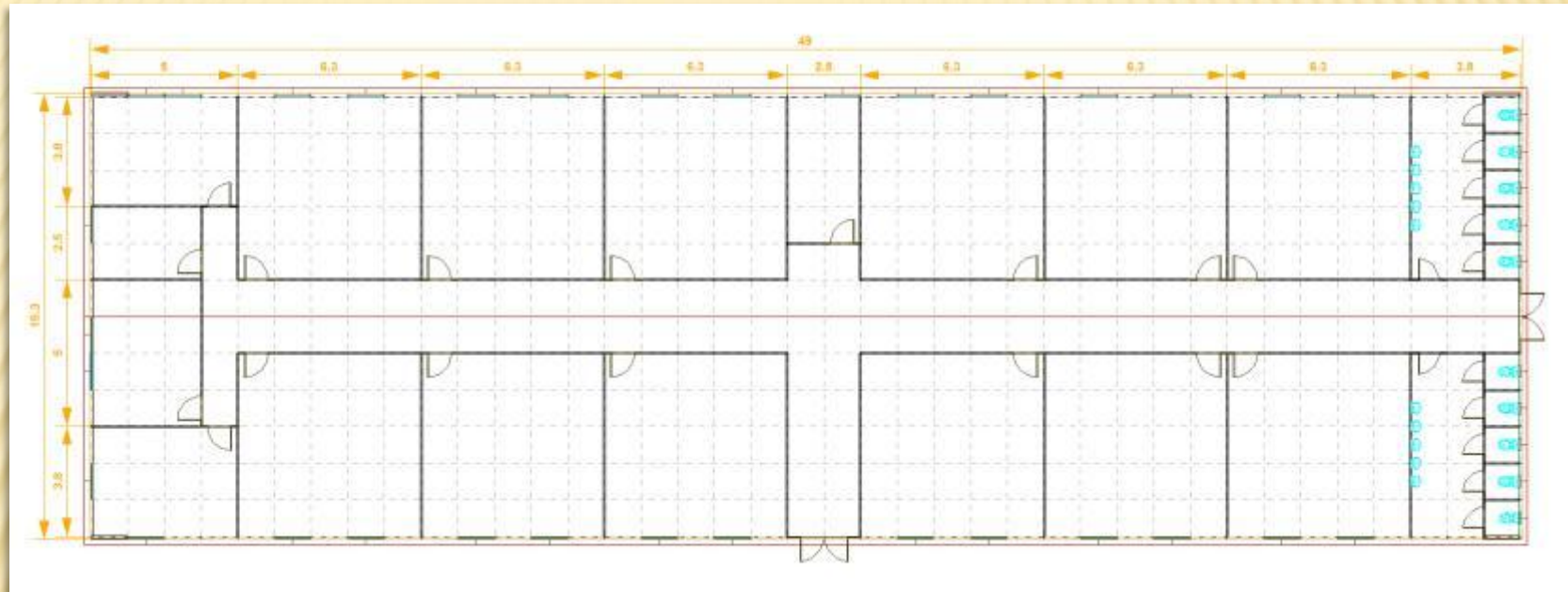
SCHOOL 3 – 430 M2

- 6 classrooms
- 2 multi purpose areas
- 4 bathrooms
- 1 Offices



SCHOOL 4– 544 M2

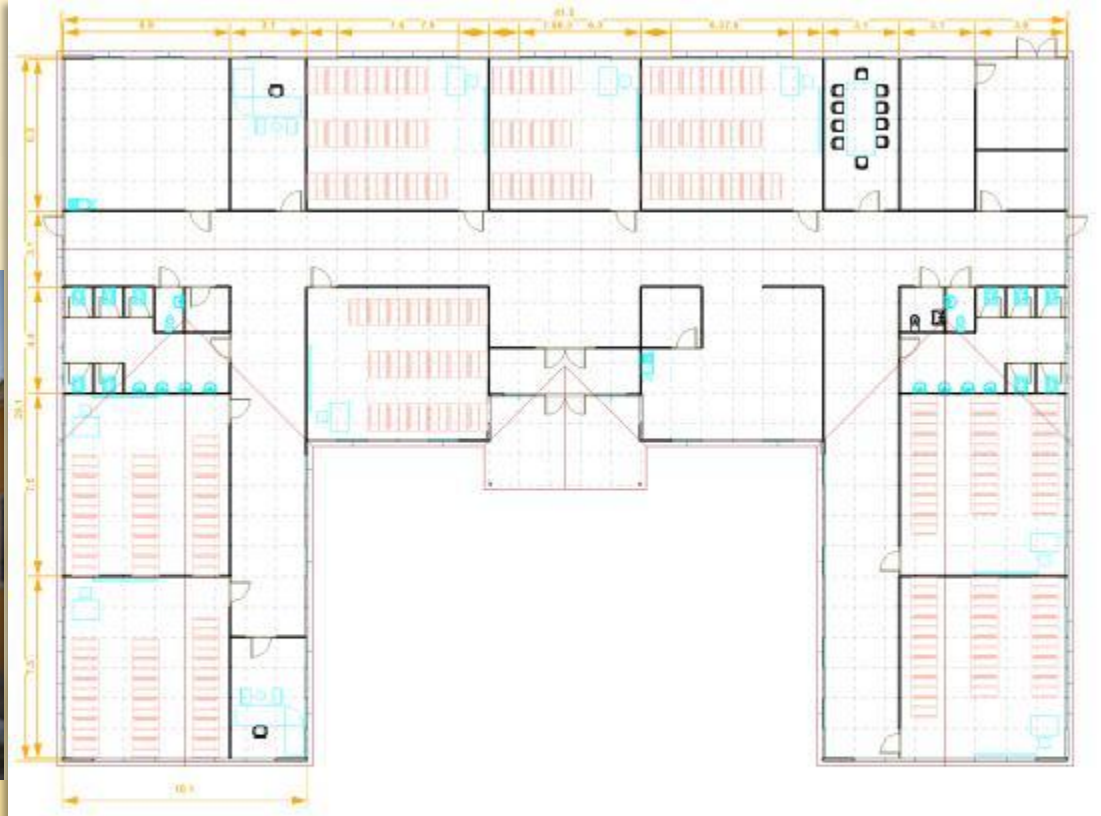
- 8 classrooms
- 2 multi purpose areas
- 4 bathrooms
- 1 Offices

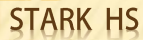


SCHOOL 5 – 741 M2

- 12 classrooms
- 2 multi purpose areas
- 4 bathrooms
- 1 Offices

- 8 classrooms
- 2 multi purpose areas
- 4 bathrooms
- 4 Offices





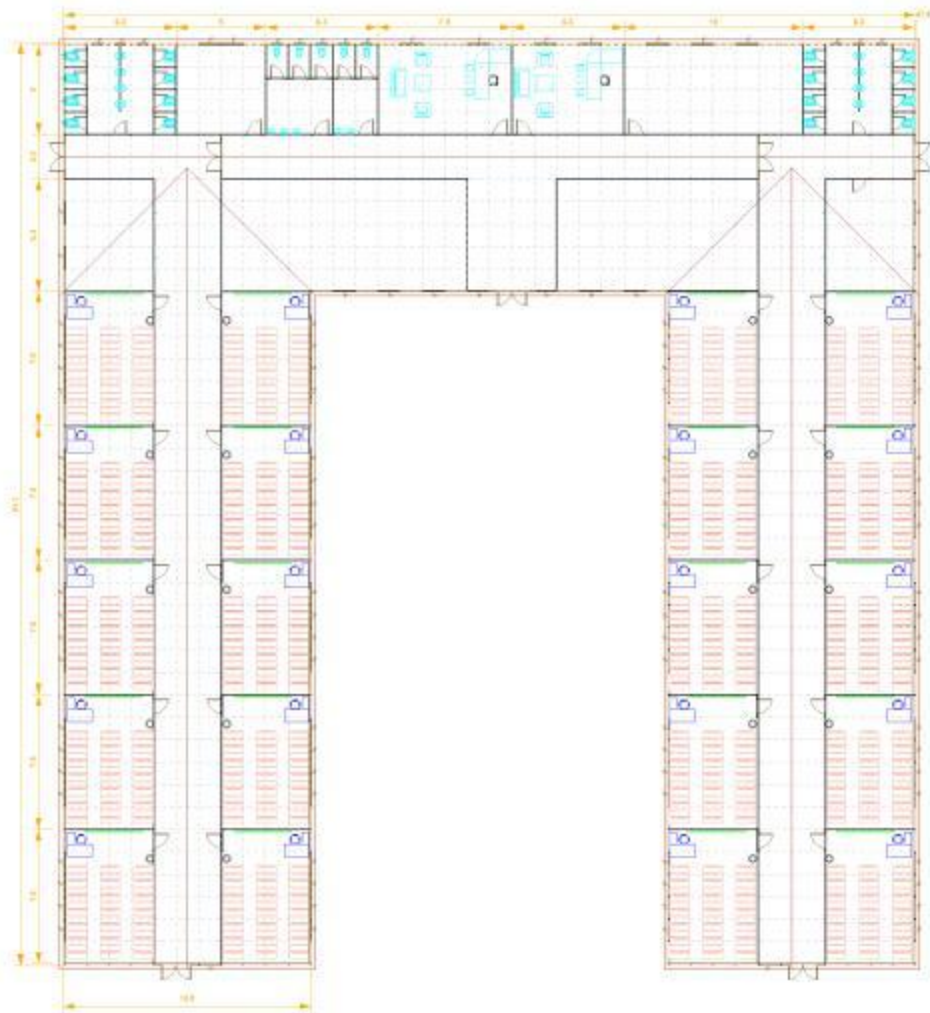
- 10 classrooms
- 8 multipurpose areas
- 4 bathrooms
- 2 Offices

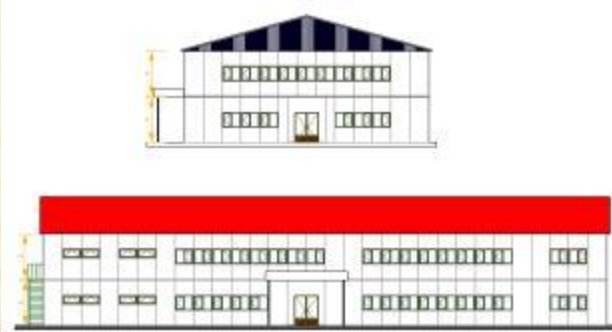




SCHOOL 8 –1704 M2

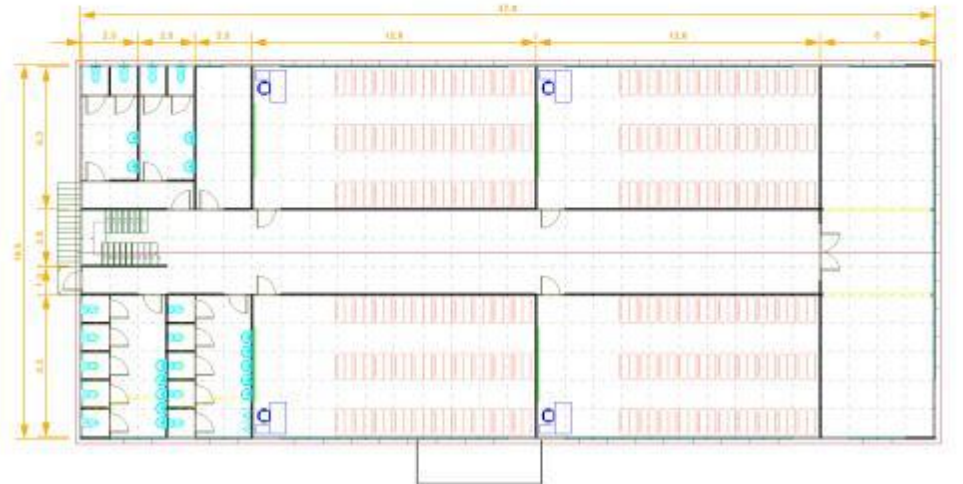
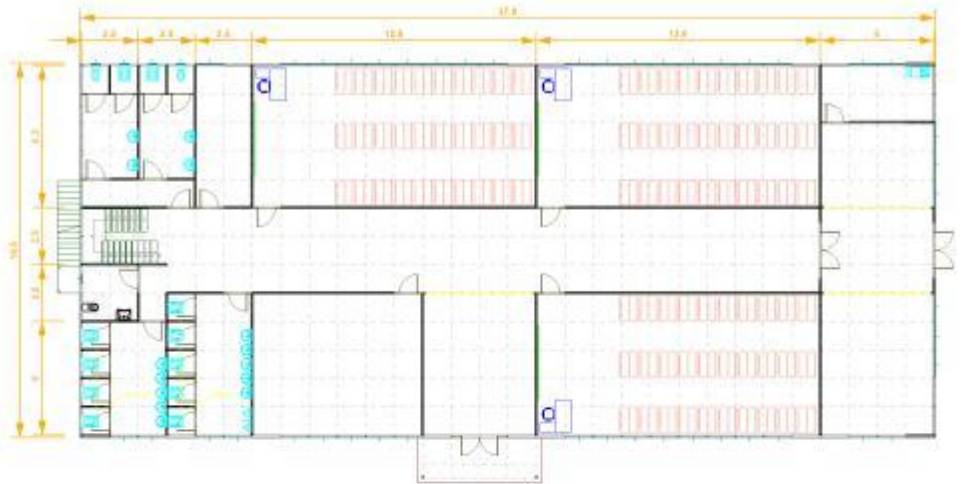
20 classrooms
5 areas multipurpose
4 bathrooms
3 Offices





SCHOOL 9 –1246 M2

- 7 classrooms
- 4 multipurpose areas
- 8 bathrooms
- 2 Offices



EDUCATIONAL BUILDING (SCHOOL 9)



EDUCATIONAL BUILDING (SCHOOL 9)



PHOTO GALLERY

INTERIOR VIEW



INTERIOR VIEW



PHOTO GALLERY

WITH 5 DAYS OF WORK



WITH 3 DAYS OF WORK



PHOTO GALLERY

HOUSING DEVELOPMENT



RESIDENTIAL DEVELOPMENT



PHOTO GALLERY



The system is based on HS STARK precast specially designed for quick installation without welding. May be designed to cover specific areas as required, and can be applied to applications:

- EDUCATION
- MEDICAL
- RESIDENTIAL
- GOVERNMENT
- CARE
- RECREATIONAL

APPLICATIONS



STARK HS

TECHNICAL DETAILS

Technical Data

- Snow load: According to requirements
- Wind Speed: According to requirements
- Maximum load capacity: 200/350/500 Kg / m².
Depending on the location and type of building.
- Seismic Calculus: ion acceleration $A_0 = 0.40$ (1st grade Seismic region)

External and internal walls

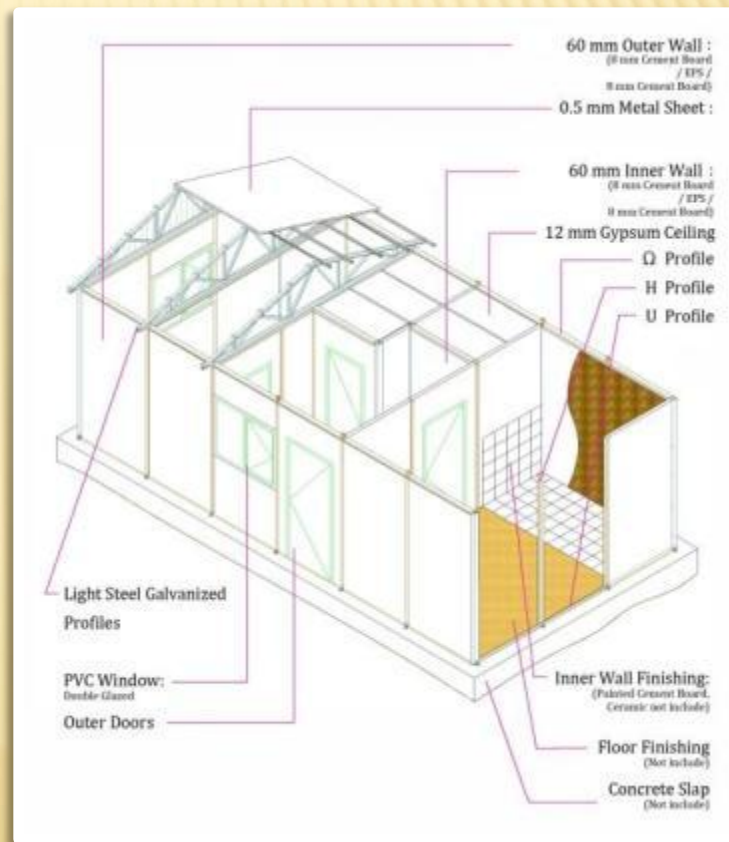
- Thickness: 60 mm to 100 mm
- Outer surface: Sheet Cement 8 mm thick (CE Certificated)
- Sonic & Thermic Isolation: EPS of 44 mm thick (12 kg/m³)
- Fire resistance: "Strong Fire Resistant Material " Class "B 1" according to DIN 4102
- System connections: Through specially designed galvanized profiles installation without welding.
- Exterior finish on walls: Plastic Painting (2 layers)

Ceiling

- Dry areas: Plaster sheets of 12.5 mm thick. 60 x 120 cm. Plastic Paint
- Humid Areas: Plaster sheets of 12.5 mm thick. 60 x 120 cm. Water resistant plastic Paint.
- Insulation: Rockwool fiber 80 mm thick, resistant to moisture.
- Structure: Galvanized Omega Profiles
Electromagnetic powder-coated.

Ceiling Detail

- Roof covering: trapezoidal sheet galvanized 0.50 mm thick
- Belts and roof trusses: galvanized profiles manufactured without welding. To be installed without welding.
- Excludes droppers or rainwater channels
- The eaves have special holes to evacuate moisture and heat.





STARK HS

Building Solutions

9383 NW 13 ST
MIAMI, FL 33172
Ph: (786) 314-7036
Fax: (954) 333-3579
info@starkmf.com

Thanks!

By:

