



**STARK HS**

*Building Solutions*

# **MEDICAL SOLUTIONS**

By:





The system is based on HS STARK precast specially designed for quick installation without welding. May be designed to cover specific areas as required, and can be utilized to a variety applications

- EDUCATION
- MEDICAL
- RESIDENTIAL
- GOVERNMENT
- CARE
- RECREATIONAL

# DESCRIPTION



STARK HS

# TECHNICAL DETAILS

## Technical Data

- Snow load: According to requirements
- Wind Speed: According to requirements
- Maximum load capacity: 200/350/500 Kg / m<sup>2</sup>.  
Depending on the location and type of building.
- Seismic Calculus: ion acceleration  $A_0 = 0.40$  (1st grade Seismic region)

## External and internal walls

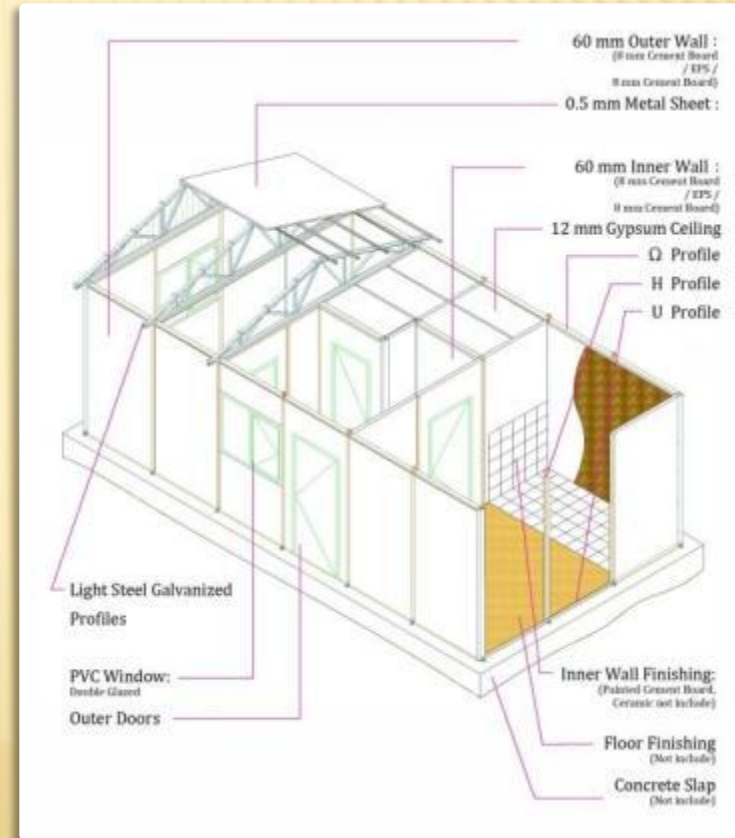
- Thickness: 60 mm to 100 mm
- Outer surface: Sheet Cement 8 mm thick (CECertificated)
- Sonic & Thermic Isolation: EPS of 44 mm thick (12 kg/m<sup>3</sup>)
- Fire resistance: "Strong Fire Resistant Material " Class "B 1" according to DIN 4102
- System connections: Through specially designed galvanized profiles installation without welding.
- Exterior finish on walls: Plastic Painting (2 layers)

## Ceiling

- Dry areas: Plaster sheets of 12.5 mm thick. 60 x 120 cm. Plastic Paint
- Humid Areas: Plaster sheets of 12.5 mm thick. 60 x 120 cm. Water resistant plastic Paint.
- Insulation: Rockwool fiber 80 mm thick, resistant to moisture.
- Structure: Galvanized Omega Profiles  
Electromagnetic powder-coated.

## Ceiling Detail

- Roof covering: trapezoidal sheet galvanized 0.50 mm thick
- Belts and roof trusses: galvanized profiles manufactured without welding. To be installed without welding.
- Excludes droppers or rainwater channels
- The eaves have special holes to evacuate moisture and heat.





**STARK HS**

*Building Solutions*

**HEALTH BUILDINGS**

By:





## MEDICAL BUILDINGS

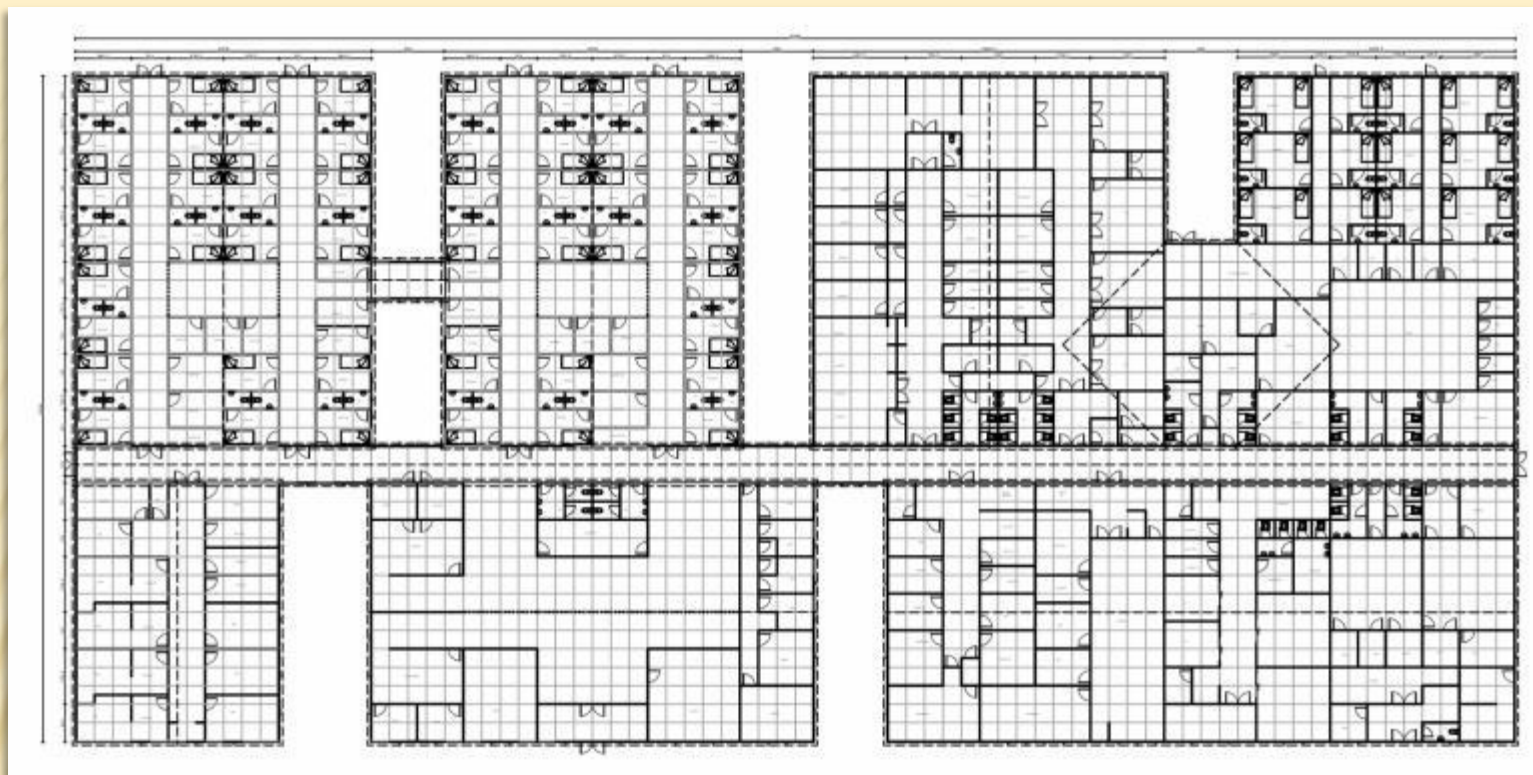
STARK HS System can adapt to any type of project Hospital, with a short construction period. Their surfaces accept diversity of materials commonly used to provide the required hygiene. Buildings of one or two floors.



## NURSING 102 M2

Buildings for health care in small communities. General medical services

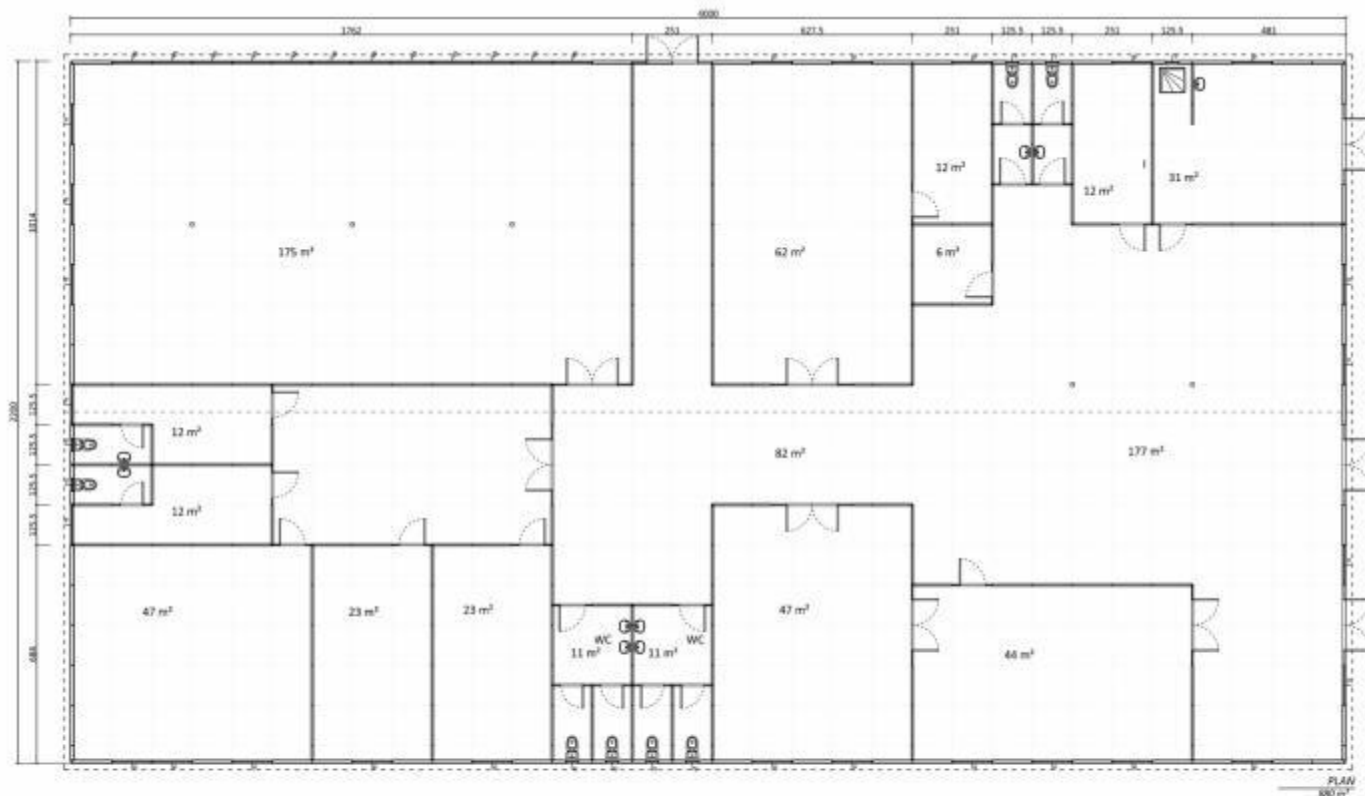




## MEDICAL SERVICES 4002 M2

Installation for comprehensive medical services. Areas tomography, radiology, laboratory, medical, management, recovery rooms, etc..





**MEDICAL SERVICES**  
**880 M2**





HOSPITAL OF 1,340 M2



INSTALLATION IN 30 DAYS



**MEDICAL BUILDINGS - GALLERY**

**CONSTRUCTION PHASE**



**BUILDING COMPLETED (FOR PAINTING)**



**MEDICAL BUILDINGS - GALLERY**



**STARK HS**

*Building Solutions*

9383 NW 13 ST  
MIAMI, FL 33172  
Ph: (786) 314-7036  
Fax: (954) 333-3579  
[info@starkmf.com](mailto:info@starkmf.com)

***Thanks***

By:

